

GPS CREATIONS
PO BOX 381272
GERMANTOWN, TN 38183-1272
USA - Phone: 949-547-0608
FAX: 949-200-7416
Email: sales@gpscreations.com



GPS Creation's GPS1011 - HORN ANTENNA

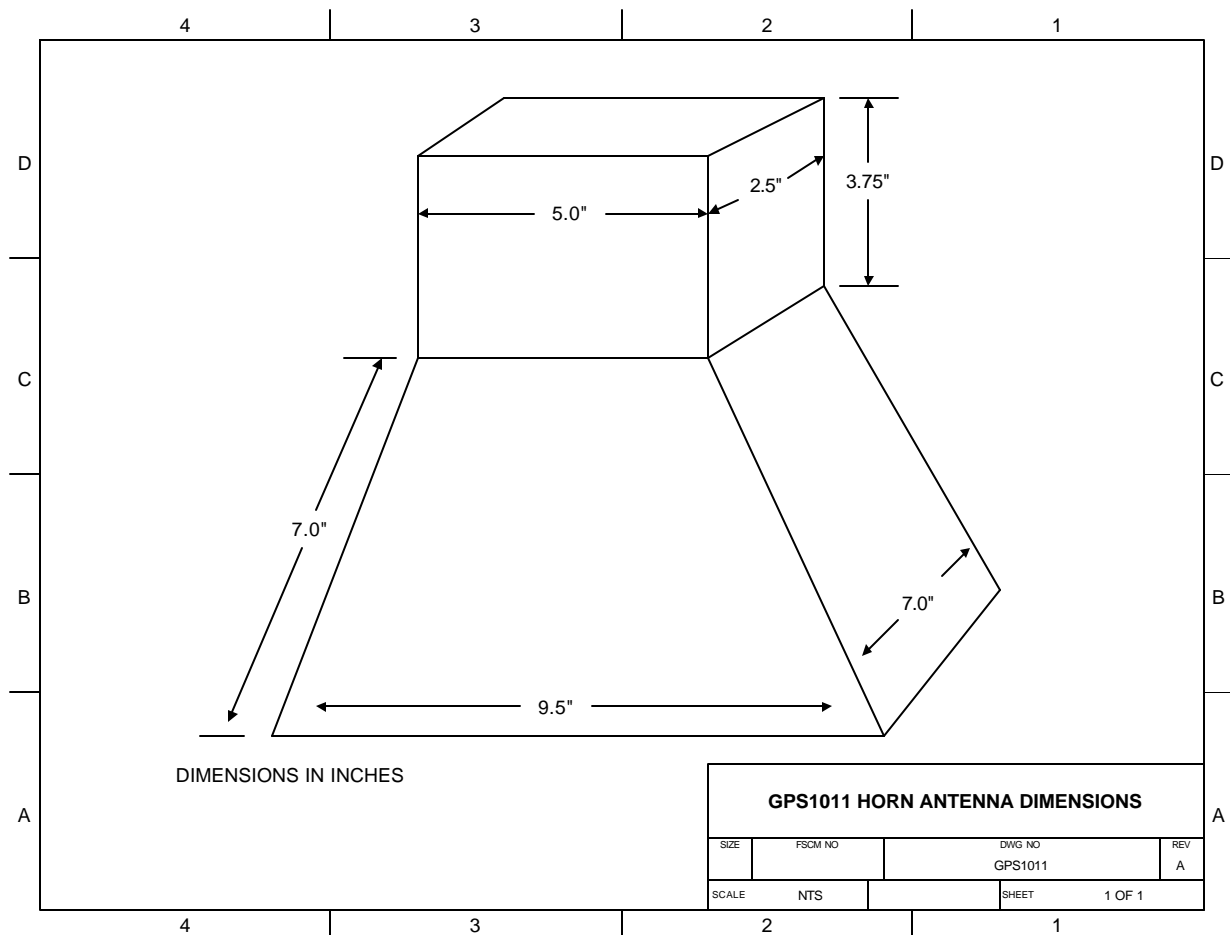


Inside View of the GPS1011 antenna

The **GPS1011** lightweight "all aluminum" construction horn antenna is used in applications where there is a need to closely control the radiation of GPS signals. Generally, this antenna is used with a GPS simulator or with GPS re-radiation systems. The GPS1011 has been designed to fit directly over other GPS devices such as mobile antennas or receiver modules which contain a built-in patch antenna. Electrical connection to the antenna is by way of a standard female BNC connector.

The bottom of the horn antenna is partially enclosed as shown in the above photo. There is a metallic foam strip around the cut-out opening which is used to further prevent stray signal radiation. The GPS1011 has a convenient carry handle which may be removed for permanent installation of the antenna if desired.

The outside of the antenna is powder coated with a light gray colored paint material. Specifications and dimensions for the GPS1011 are shown on page 2 of this document.



GPS1011 Specifications¹

Electrical Specifications

Frequency: 1575 MHz.
 Gain: Zero – passive, no amplification
 Leakage: Front-to-back, -30 dB min.
 Impedance: 50 ohms
 Connector: BNC Female

Mechanical Specifications

Size: 10.0 H x 9.5 W x 7.0 D (excluding carry handle)
 Weight: 2.0 lbs.
 Construction: Brushed aluminum, welded and powder coat finish
 Color: Light Gray

1) Specifications are subject to change without notice, please contact GPS Creations for questions on this product.